

Welcome to



For more info and our latest products, visit us at:
www.groundmantools.com

SAFETY FIRST!

Use the 2-n-1 system inside your lift, and never hang it outside of the railing.

Do NOT overload. The system is designed for a load capacity of 200 LBS of conduit and/or wire and should not exceed lift specs for total weight allowance.

Use precaution when operating the lift. The wedge clips (includes 4 per pair) are designed to assist with a snug fit to the railing. Before driving the lift, make sure the 2-n-1's are secure, and staying in place.

Groundman Tool Co. is in no way directly affiliated with the lift manufacturers and the safety guidelines, weight limitations, and procedures should be followed in accordance with your specific lift specifications.

Groundman tools will not be held liable or responsible for any accidents or injuries caused by misuse of our products.

Our tools are made from the highest quality injection molding processes and materials. The durability of our products are rugged and designed for use in the construction industry. ALL other uses are prohibited.

We manufacture in the U.S.A. If purchased outside of the U.S., please check lift railing sizes and compatibility in your country. Our systems are standard and suitable for MOST lifts in the U.S.

We do not offer returns or warranties outside of product defects. Damaged tools due to misuse, are non-refundable.

Our tools are designed for standard square tube aerial lift railing systems.

Always check your surroundings for safe operation.

We would like your feedback! If you have a comment or suggestion on our products, please email us: Groundmantoolco@gmail.com

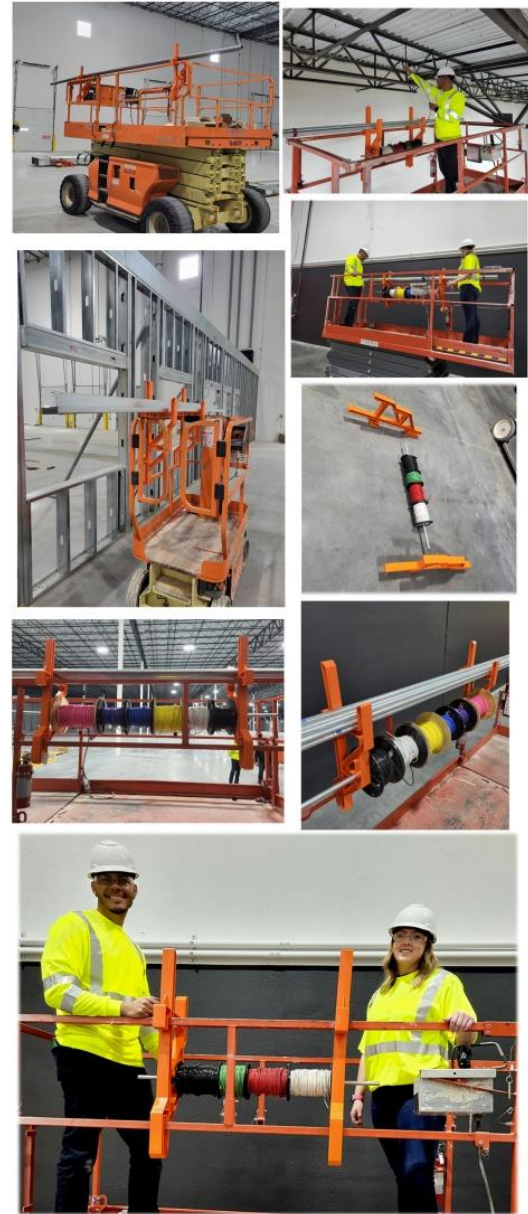
RETURNS:

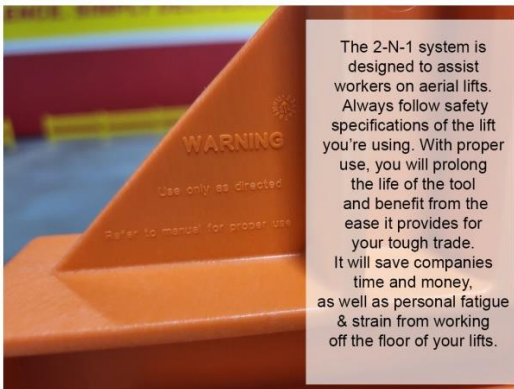
All material must be new and unused, of current design, and in resalable condition. Products must be shipped freight prepaid to the warehouse. A 15% handling and restocking fee will be applied and credit memos can only be applied to future orders.

LIMITED 90 DAY WARRANTY:

We will replace or issue credit for any Groundman Tool Co. product found to be defective or malfunctioning within 90 days of purchase. This warranty covers replacement of defective parts or product provided the failure is not due to abuse, abnormal use, or not by normal wear and tear. Invoice or proof of purchase is required. Please contact us for instructions.

Patent: US-2024-0088633-A1





The 2-N-1 system is designed to assist workers on aerial lifts. Always follow safety specifications of the lift you're using. With proper use, you will prolong the life of the tool and benefit from the ease it provides for your tough trade. It will save companies time and money, as well as personal fatigue & strain from working off the floor of your lifts.



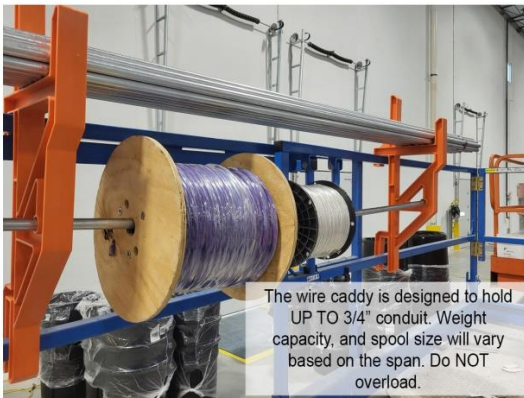
2-N-1 Conduit organizer and wire caddy.



The maximum weight for the system should not exceed 200LBS. Do NOT overload the organizer and always check lift specifications for total weight capacity.



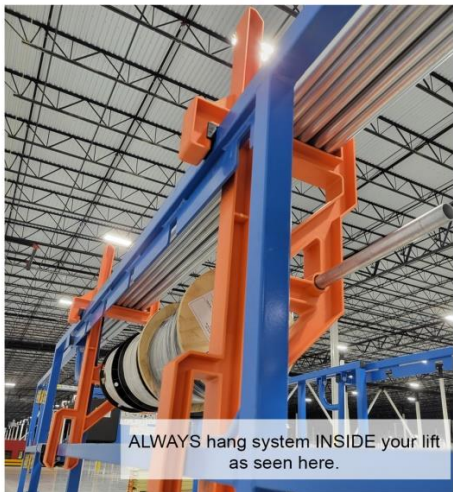
For best safety practices, load your wire first on the deck of your lift, and have another person help you load onto the railing before adding conduit.



The wire caddy is designed to hold UP TO 3/4" conduit. Weight capacity, and spool size will vary based on the span. Do NOT overload.



The 2-N-1 can be spaced at any length apart in your lift to accommodate any pipe, conduit, etc. Use caution to not overload wire onto the suspended conduit.



ALWAYS hang system INSIDE your lift as seen here.



For use with conduit, unistrut, studs, all-thread, pipe, and more. No install required. Use the included wedge clips for a tighter fit when needed.



Our tools are designed to fit on the railing of almost any square tube scissor lifts, and come with adapters to accommodate obscure sizes.

Workers such as electricians on platform lifts need to access and use conduit and wire on spools during a job. Often, workers leave conduit and wire on the floor of the lift platform. They are prone to being accidentally kicked off the platform which is dangerous to others below the platform. Also, keeping such items on the floor requires the worker to repeatedly lean over to pick up the item. This leads to back injury, especially because the platform is small and the worker cannot always position himself in an optimal position to bend over, especially if more than one worker is on the platform or is wearing a safety harness that limits mobility. Having to reach for items from a platform floor also takes time, and there is a desire to minimize the time required for any job. Also, construction items need to be organized. For example a job can be completed more efficiently if necessary items such as conduit and wire are always located in a consistent place on the lift, and are accessible without having to bend over.

It is also desirable to provide a system that can easily be relocated between different lift platforms, or to other locations on the same lift platform, and that does not require any hardware to attach it to the platform.

Welcome to Groundman tools new release of the
2-N-1 Conduit organizer and wire caddy!